

**BEATSON'S**  
BUILDING SUPPLIES  
**MULLRALLY '25**  
MULLRALLY

# SUPPLEMENTARY REGULATIONS

10<sup>TH</sup> - 12<sup>TH</sup> OCTOBER 2025



[WWW.MULLRALLY.ORG](http://WWW.MULLRALLY.ORG)

#MUSTBEMULL  
#MULLRALLY

**BEATSON'S**  
BUILDING SUPPLIES  
[www.beatsons.co.uk](http://www.beatsons.co.uk)





Welcome to the 2025 Beatson's Building Supplies Mull Rally.

My Mull Rally story began in the early 90's as a member of a service crew. I fell in love with the island from that moment, and have returned to service, spectate and compete over the years. I feel I understand what Mull Rally means to the different people involved.

I am honoured to be the Clerk of the Course this year. With the support of the Mull Rally Trustees and the rest of the organising team, we work diligently all year round to gain approvals and permissions from the local community, Council and Police Scotland. This is not a job you can do by yourself.

As we approach the event, the team's size increases until rally weekend, when the volunteer headcount nears 500. I am only a small part of the team that put on this special event. Rallying is a unique sport that unites people from diverse backgrounds, sharing a common passion. This is our rally family. We all look after each other and work together to create motorsport memories.

Mull Rally is a unique and distinctive event. Two-thirds of the rally is held in darkness, and along with the extended mileage, offers a unique challenge on very technical roads. The endurance of competitors, balancing skill with concentration throughout the legs is incredible and unlike anything else. This makes it the best rally in the world.

The local communities support Mull Rally. The farmers who are inconvenienced by having to move livestock to safe areas and plan their feeding, and the residents who must plan their shopping and work around the road closures. We are also supported by the shops, cafes and restaurants that welcome us all with open arms. I thank you all.

I also thank Richard Crozier for bringing me onto the organising team in 2022 and introducing me to a side of the Mull Rally that I hadn't experienced before. The team wishes Richard the best of luck with his future motorsport endeavours, and thank you from everyone.

As ever, our gratitude goes to John and Ross Marshall of Beatson's Building Supplies for their continued support of the event, to everyone on the island for allowing us to use their roads for the weekend, and to all the support facilities and marshals who ensure that the sport can take place safely. We also extend our appreciation to Argyll & Bute Council and Police Scotland for their proactive support in helping us organise the event.



We look forward to welcoming you all to Mull over the weekend of 10th - 12th October, and to continuing the legacy that is rallying on this special island.

*Colin Harkness*

*Clerk of the Course*

*Licence: 76720*

## Contents

---

1.	Programme	9	Features of the Rally
2.	Organisation and Description	9.1	Official Notice Board
2.1.	Announcement	9.2	Start Procedure
2.2.	Permit Numbers	9.3	Ordnance Survey Maps
2.3.	Organiser's Name	9.4	Running Order, Starting Intervals & Timing
2.4.	Event Address and Contact Details	9.5	Damage Declarations
2.5.	Mull Rally Trustees	9.6	Starting System of Special Stages
2.6.	Organising Team	9.7	Rejoin after Retirement on Leg 1 or 2
2.7.	Stewards of the Meeting	9.7.1	Service Location and Time Allowed
2.8.	Senior Officials	9.7.2	Scrutineering of Repaired Cars
2.9.	Road Surface	9.7.3	Re-start Penalties
2.10.	HQ Location	9.8	Penalties
3.	Entries	9.9	Judges of Fact
3.1.	Entry procedure	9.10	Results Posting
3.2.	Number of Entries Accepted	9.11	Shakedown
3.3.	Eligible Competitors and Cars	9.12	Safety Tracking
3.4.	Entry Fees	10.	Servicing
3.5.	Payment Details	10.1.	Permitted Areas
3.6.	Refunds	10.2	Service Health & Safety
4.	Insurance	10.3	Refuelling
4.1.	Organiser's Insurance	10.4	Tyres
4.2.	Competitor's Insurance	11.	In Car Cameras
5.	Competitor's Declaration	11.1.	Filming rights
6.	Advertising	12.	Prizes
6.1.	Organiser's Advertising	12.1.	Location
6.2.	Rally Plates	12.2.	Prizes
7.	Reconnaissance	12.3.	Eligibility for Awards
7.1.	Procedure for Registration		Appendix 1 – Schedules
7.2.	Restrictions		Appendix 2 – Competitor Liaison Officers
7.3.	Offences During Reconnaissance		Appendix 3 – Competitors Numbers & Advertising
7.4.	Pace Notes/Subjective Route Notes		Appendix 4 – Rally & Competition Equipment
8.	Administrative Checks		Escort Challenge Eligibility
8.1.	Documents to be presented		Appendix 5 – Safety Tracking System
8.2.	Competitors' Briefings		Instructions
			Appendix 6 – Race With Respect
			Appendix 7 – Environmental Sustainability



The **Beatson's Building Supplies Mull Rally** will be held under the National Competition Rules of Motorsport UK (incorporating the provisions of the International Sporting Code of the FIA) and these Supplementary Regulations.

Modifications, or changes to these Supplementary Regulations will be announced only by numbered and dated bulletins (issued by the organiser).

The 2025 Motorsport UK National Competition Rules can be found at:  
<https://www.motorsportuk.org/resource-centre/#ncr>

## 1. Programme

---

### Schedule before the Rally Week

Wednesday 16 <sup>th</sup> July	Supplementary Regulations published
Monday 4 <sup>th</sup> August 19.30	Online entries open
Wednesday 6 <sup>th</sup> August 19.30	Deadline for inclusion in initial entry pool
Monday 11 <sup>th</sup> August	Publication of unseeded entry list – earliest date
Thursday 18 <sup>th</sup> September	Closing date for entries
Friday 19 <sup>th</sup> September	Rally Guide 2 / Comp Info / Bulletin 1 published
Sunday 21 <sup>st</sup> September	Road book e-mailed to competitors & start of formal reconnaissance period
Friday 26 <sup>th</sup> September	Vital Equipment fuel orders closing date

## Schedule during the Rally Week

Tuesday 7 <sup>th</sup> October		
21.30	Online Documentation closes	<a href="http://www.rallies.info">www.rallies.info</a>

Wednesday 8 <sup>th</sup> October		
21.30	Tunnock's Teacake Eating Contest	MacGochans, Ledaig Car Park, Tobermory, PA75 6NR, ///mistaken.nuance.caressed
TBC	Merchandise shop	Aros Hall, Tobermory, PA75 6NU, ///coarser.unopposed.luxury

Thursday 9 <sup>th</sup> October		
13.00 - 18.00	Collection of material and documents	Tobermory Harbour Association, Ledaig Car Park, Tobermory, PA75 6NR, ///wiggly.breakfast.brand
	Sound Test	Lindhu House, Tobermory, PA75 6QB, ///shifts.voices.miracles
	Scrutineering	Tobermory Distillery, PA75 6NR, ///hungry.preparing.palace
TBC	Merchandise shop	Aros Hall, Tobermory, PA75 6NU, ///coarser.unopposed.luxury
19.30	Beatson's Building Supplies Mull Rally Forum	Aros Hall, Tobermory, PA75 6NU, ///coarser.unopposed.luxury

Friday 10 <sup>th</sup> October		
07.30 - 04.40	Rally HQ Open	Tobermory High School, PA75 6PB, ///weeds.much.access
TBC	Merchandise shop	Aros Hall, Tobermory, PA75 6NU, ///coarser.unopposed.luxury
08.30 - 11.00	Shakedown – Group 1 (35 cars)	Glengorm Road, ///tilts.plank.librarian Service Location: Tobermory
11.30 - 14.00	Shakedown – Group 2 (35 cars)	
09.30 - 14.30	Collection of material and documents	Tobermory Harbour Association, Ledaig Car Park, Tobermory, PA75 6NR, ///wiggly.breakfast.brand
	Sound Test	Lindhu House, Tobermory, PA75 6QB, ///shifts.voices.miracles
	Scrutineering	Tobermory Distillery, PA75 6NR, ///hungry.preparing.palace
14.45	Competitors' Briefing (Cars 1-50)	Aros Hall, Tobermory, PA75 6NU, ///coarser.unopposed.luxury
15.30	Competitors' Briefing (Cars 51-100)	
16.15	Competitors' Briefing (all other cars)	
17.30	Publication of Start List for Leg 1	<a href="https://webapp.sportivity.com/channel/MullRally2025">https://webapp.sportivity.com/channel/MullRally2025</a>

18.15	First 15 cars on Start List must be in place at the Pre-Start area	MacGochans, Ledaig Car Park, Tobermory, PA75 6NR, /// <a href="#">cracks.dockers.kiosk</a>
19.00	Issue of Safety Trackers & Start of Leg 1	

Saturday 11 <sup>th</sup> October		
09.30 - 05.35	Rally HQ Open	Tobermory High School, PA75 6PB, /// <a href="#">weeds.much.access</a>
10.30	Publication of Start List for Leg 2	<a href="https://webapp.sportity.com/channel/MullRally2025">https://webapp.sportity.com/channel/MullRally2025</a>
11.20	Start of Leg 2	Garmony Rugby Club /// <a href="#">drank.pinging.disbelief</a>
19.45	Publication of Start List for Leg 3	<a href="https://webapp.sportity.com/channel/MullRally2025">https://webapp.sportity.com/channel/MullRally2025</a>
20.45	Start of Leg 3	Salen Hotel, Salen, PA72 6JE, /// <a href="#">adjusted.interests.wink</a>

Sunday 12 <sup>th</sup> October		
08.00 - 11.00	Rally HQ Open	Tobermory High School, PA75 6PB, /// <a href="#">weeds.much.access</a>
08.30	Publication of provisional results	<a href="https://webapp.sportity.com/channel/MullRally2025">https://webapp.sportity.com/channel/MullRally2025</a>
14.45	Winners' Parade	Aros Hall, Tobermory, PA75 6NU, /// <a href="#">coarser.unopposed.luxury</a>
15.00	Prize-giving	Taigh Solais / Mull Aquarium, Ledaig Car Park, Tobermory, PA75 6NR, /// <a href="#">inches flaunting.audit</a>

## 2. Organisation and Description

### 2.1 Announcement

The Mull Rally Trustees will promote, and Mull Car Club Ltd will organise, an Interclub permit Special Stage Rally on Friday 10<sup>th</sup> - Sunday 12<sup>th</sup> October 2025 on the Isle of Mull, to be known as the **“Beatson’s Building Supplies Mull Rally”**.

The rally is a qualifying round of the following championships:

Carnegie Scottish Tarmac Rally Championship	CH2025/RALLY012
ANWCC Stage Rally Championship	CH2025/RALLY040
ANWCC Allrounders Championship	CH2025/RALLY039



## 2.2 Permit Numbers

ASN permit no: 201552  
Scottish Government authorisation no: TBC  
Argyll & Bute Council Motor Sport Order no: TBC

## 2.3 Organiser's Name

Mull Car Club Ltd

## 2.4 Event Address and Contact Details

Mull Rally  
Duntulm Tel: +44 (0)7776 054962  
Salen,  
Isle of Mull Email: secretary@mullrally.org  
PA72 6JB Web: www.mullrally.org

## 2.5 Mull Rally Trustees

Geoffrey Gallagher, Malcolm Macdonald, Cameron Maclean, Norman MacPhail, Neil McHaffie, John Paterson, Kenny Wilson

## 2.6 Core Organising Team

Nigel Atkinson, Keith Cowan, Ron Cowan, Neil Du Cros, Mark Forsyth, Colin Harkness, Neil McHaffie, Gordon Milne, Amanda Morrison, Sue Sanders & Tom Wilson

## 2.7 Stewards of the Meeting

Appointed by the ASN Pete Weall  
Appointed by the Organisers Val Thomson  
Bryan Hull

## 2.8 Event Officials

Clerk of the Course	Colin Harkness	colin@mullrally.org
Deputy Clerks of the Course	Sue Sanders	sue@mullrally.org
	Philip Murray	philip@mullrally.org
	Nigel Atkinson	
	Mark Forsyth	
Assistant Clerk of the Course	Gordon Milne	gordon@mullrally.org
Event Secretary	Amanda Morrison	secretary@mullrally.org
Entries Secretary	Graham Couser	entries@mullrally.org
ASN Safety Delegate	Nicky Moffitt	
Event Safety Officer	Neil Du Cros	safety@mullrally.org
Deputy Event Safety Officer	Richard Webster	safety@mullrally.org
Spectator Safety Officer	Neil McHaffie	
Chief Medical Co-ordinator	Graeme Brown	medical@mullrally.org



Chief Medical Officer	Eammon Ferguson	
Incident Officer	Wayne Turkington	
Safety Car Co-ordinator	Peter Stanhope	
Safety Tracking Officer	Craig Parry (Sporttraxx)	
Chief Scrutineer	Martin Robertson	scrut@mullrally.org
Scrutineers	Colin Wallace	
	Alison Mitchell	
	Ian Sinclair	
	Roger Whittaker	
Enviro Scrutineer & RZ Officer	Peter Clingan	refuel@mullrally.org
Chief Marshal	Keith Cowan	marshals@mullrally.org
Communications Officer	Leanne Ritchie	radios@mullrally.org
Service Parks Manager	TBC	service@mullrally.org
Accommodation Officer	Ron Cowan	accom@mullrally.org
Media Manager	Matt Cotton	media@mullrally.org
Competitor Liaison Officers	Amanda Morrison	clo@mullrally.org
	Campbell Roy	clo@mullrally.org
	Dave Thompson	clo@mullrally.org
Results Officer	Brian Thomson	
Chief Timekeeper	Richard Blackshaw	
Deputy Chief Timekeeper	TBC	
Environmental Champions	Anna Kebke/	
	Thomas Johnstone	sustainability@mullrally.org
Safeguarding & Welfare Officer	Neil McHaffie	safeguarding@mullrally.org

## 2.9 Road Surface

100% asphalt

## 2.10 HQ Location

Tobermory High School, Argyll Terrace, Tobermory, Isle of Mull, Argyll & Bute, PA75 6PB,  
 ///weeds.much.access

## 3. Entries

---

### 3.1 Entry Procedure

All entries for the 2025 Beatson's Building Supplies Mull Rally must be made on the online entry system which can be found at [www.mullrally.org](http://www.mullrally.org) and <https://rallies.info/webentry/2025/mull/> when entries open. Anybody who has difficulty using the online entry system should contact the Entries Secretary.

- Entries will open on Monday 4th August at 19.30.
- All fully completed entries submitted by 19.30 on Wednesday 6th August will be ring-fenced into a candidate pool.
- The organising team will select approximately 50 entries at their discretion. Of these:-
  - 5 entries for 'first-time' Mull Rally competitors
  - 5 entries for 'local' Isle of Mull / Argyll & Bute competitors
  - 5 entries for 'regular' competitors with 15+ Mull Rally / Tour of Mull starts, 1995+
  - 5 entries for 'Historic/Alternative Energy' vehicles in Classes 15 and H
- No communication will be entered into regarding these.
- Entries will then be selected at random from the remaining candidate pool, to bring the total to 150.
- Those 150 crews will be notified and given a reference number to use when making direct payment. They will have 5 days to make payment of 50% of the entry fee. Do not send payment until you have a reference number.
- The remaining entries within the candidate pool will be allocated onto the reserve list in a random order.
- Upon completion of the payment process, the first unseeded entry list may be published. This will not occur any earlier than Monday 11th August, and may be later.
- All entries received after 19.30 on Wednesday 6th August, & incomplete entries, will be placed on the reserve list, behind the initial candidate pool.
- All entries from the initial 150, who have failed to pay the first 50% instalment within the 5 days period, will be placed at the bottom of the reserve list.
- If and when entries are withdrawn, reserves will be offered entries in the order in which they feature on the reserve list. At that point their entry payment will be due within five days.
- Entries who subsequently fail to pay balance of the second 50% instalment by Thursday 4th September will be placed at the bottom of the reserve list.

### 3.2 Number of Entries Accepted

The maximum number of entrants will be 150. The minimum is 125. Should the minimum number not be reached, then the organisers retain the right to cancel the event.

### 3.3 Eligible Competitors and Cars

The event is open to all members of Mull Car Club, registered contenders in the championships listed in SR2.1, and members of other clubs belonging to the:

- Scottish Association of Motor Sports Clubs
- Association of North East and Cumbria Car Clubs
- Association of Northern Car Clubs
- Association of North Western Car Clubs

Each driver and co-driver must produce valid licences as issued by Motorsport UK or Motorsport Ireland, and club membership cards which will be inspected during online administrative checks. The event is also a National Competition Authorised for Foreign Participation, and is open to foreign competitors who have the correct competition licences and permission from their ASN to compete in the event.

Competing cars shall be divided into the following classes:

Cl.	NCR Cl.	Description
1	1	Homologated (and formerly homologated) FIA Rally2 and R5 cars and any derivatives FIA S2000 specification cars and any derivatives All World Rally cars (must comply with their homologation)
2	2	All 4-wheel drive cars over 2000cc not eligible for Class 1
	4	Homologated FIA Rally3 cars and Group NR4 that still comply with their homologation
3	3	2-wheel drive cars with normally aspirated engines over 2000cc or forced induction engines over 1500cc. Homologated (and formerly homologated) FIA RGT cars.
5	5	Homologated FIA Rally4 and R2 cars with forced induction that still comply with their homologation
	6	Cars with normally aspirated engines over 1600cc up to and including 2000cc, or forced induction engines up to and including 1500cc
	7	Homologated FIA Rally5 and Rally5-Kit cars
8	8	Cars with normally aspirated engines over 1400cc up to and including 1600cc, including R2, or forced induction engines up to and including 1000cc
9	9	Cars with normally aspirated engines up to and including 1400cc
15	15	Hybrid Electric and Full Electric cars of all types
H	H1 - H16	Historic Category 1-5 Rally Cars, including FIA Appendix K, up to 31.12.1999

Vehicles in class H must be in possession of either a valid Motorsport UK Historic Rally Vehicle Identity Form (HRVIF) or FIA Historic Technical Passport (HTP).

If fewer than five cars are entered in any one class, the Organisers reserve the right to amalgamate classes.

### 3.4 Entry Fees

Entry Fee: £1050.00

Payable in two instalments –

50% at point of entry; 50% by Thursday 4th September

Charity: £30 donation to named Mull good causes. Entrants will be required to contribute to at least one of the options offered for entry to be valid. Full details will be included within the entry form.

Team entries: £20 per 3 car team. Entries will be accepted up to 14.30hrs Fri 10<sup>th</sup> October 2025.

### 3.5 Payment Details

The entry fee instalments should be paid by direct bank transfer only, and the first instalment should reach the Organiser's bank account within five days of the entrant being notified of an entry and receiving a reference number. Entrants must include surname and reference number in the reference section of the direct payment. Bank account details will be emailed to successful entrants.

### 3.6 Refunds

Entry fees may be refunded, less an administration charge of £80, for entries withdrawn before the closing date or if the event does not run. Entries withdrawn after the closing date and up to 48 hours before the event (i.e. 19.30hrs Wednesday 8<sup>th</sup> October) will receive a 50% refund, irrespective of whether a reserve is able to take their place. Thereafter refunds will be at the discretion of the organisers.

## 4. Insurance

---

### 4.1 Organiser's Insurance

The entry fees include the insurance premium to insure the competitors and other parties as necessary against third party risks whilst taking part in such parts of the Rally on private lands or roads, and special stages.

The indemnity provided under this special insurance is £100,000,000 (Sterling) covering any one incident or accident. The cover is provided for such period as the Organising Permit is in force. The first £500 of any claim against this policy for damage to property will be the responsibility of the competitor causing the damage.

### 4.2 Competitor's Insurance

Vehicles must have a valid motor insurance policy which provides as a minimum, Third Party Liability cover that complies with the Road Traffic Act. This can be either, by extending an existing motor policy to cover the event, or, by purchasing additional cover provided under the Event Road Section Scheme as an adjunct to an existing motor policy.

If a competitor has an extension to their existing policy they will be required to sign a declaration that the cover complies with the requirements of the Road Traffic Act. Any responsibility for a fraudulent or misleading declaration about existing cover lies with the competitor.

If a competitor wishes to purchase additional Road Section cover via the organisers then they can do so prior to the event providing they comply with the following.

- Is aged 19 years or over
- Has held a full UK / EU driving licence for a minimum of 6 months
- Has no more than 6 conviction points on their licence; no bans of any kind
- Has had no more than 1 fault claim in the last 3 years
- Do not have the Third-Party Extension Cover on their existing motor policy
- The vehicle has a valid MOT, Insurance and taxed for the road, unless exempt from doing so

Anyone aged less than 19 years old will also be accepted at the same price should their co-driver be a more senior member of their family or over 25.

Any competitor who falls outside these parameters may be offered cover at equivalent terms or an agreed price, if approval from the Appointed Insurance Broker has been obtained by the event organisers, prior to the event.

Approval can be sought by Event Organisers sending an email to [contact@reis.co.uk](mailto:contact@reis.co.uk) and provide the Drivers' name and date of birth, the date they passed their driving test and full details of any motoring claims and/or convictions.

Additional cover provided by this scheme is only effective whilst the vehicle is actively competing in the event and remains under the control or direction of the event organiser(s). Cover will cease immediately if you are precluded, disqualified or retire from the event.

The Event Road Section scheme is underwritten by First Underwriting Limited who are authorised and regulated by the Financial Conduct Authority (FCA No 62485) and are registered in England and Wales (No 07857938).

Registered Office: Level 15, The Gerkin, 30 St Mary Axe, London, EC3A 8EP

Reis Motorsport Insurance is a trading name of Kingfisher Insurance Services Limited. Authorised and regulated by the Financial Conduct Authority No. 310218.

Registered in England and Wales No. 01469545.

Registered Office: 768 Hagley Road West, Oldbury, Warley, West Midlands, B68 0PJ.

## 5. Competitor's Declaration

---

### **Entrants, drivers and co-drivers will be required to sign the following declaration:**

I declare that I have been given the opportunity to read the NCR and if any the Official Documents for this Event and agree to be bound by them. I declare that I am physically and mentally fit to take part in the Event and I am competent to do so. I acknowledge that I understand the nature and type of Competition and the potential risk inherent with motor sport and agree to accept that risk.

I understand that motor sport can be dangerous and accidents causing death, injury, disability and property damage can and do happen. I understand that these risks may give rise to my suffering personal injury or other loss and I acknowledge and accept these risks.

In consideration of the acceptance of this Entry I agree that neither any one of or any combination of the ASN and / or its associated Clubs, the Organisers, the Track owners or other occupiers, the promoters and their respective, officers, servants, representatives and agents (the "Parties") shall have any liability for loss or damage which may be sustained or incurred by me as a result of participation in the Event such as damage to property, economic loss, consequential loss, reputational loss or financial loss howsoever caused ('Losses'). Nothing in this clause is intended to or shall be deemed to exclude or limit liability for death or personal injury. To the fullest extent permitted by law I agree to hold harmless each of the Parties in respect of any Losses whatsoever and howsoever arising from my participation in the Event. Further I agree to accept responsibility for and where necessary compensate the Parties in respect of any Losses arising or howsoever caused by my negligence or actions where they are determined to be in breach of the Motorsport UK National Competition Rules as they apply to my participation in the Event."

To the best of my belief the driver(s) possess(es) the standard of competence necessary for the Event to which this entry relates and that the vehicle entered is suitable and roadworthy for the Event having regard to the course and the speeds which will be reached.

I declare that the use of the Vehicle hereby entered will be covered by insurance as required by the law which is valid for such part of this Event as shall take place on roads as defined by the law. I declare that the vehicle entered is registered taxed has a valid MOT certificate (where appropriate) and is roadworthy as required by law.

I understand that should I at the time of this Event be suffering from any disability whether permanent or temporary which is likely to affect prejudicially my normal control of the vehicle, I may not take part unless I have declared such disability to the ASN Motorsport UK which has following such declaration issued a licence which permits me to do so.

If I am the Parent/Guardian/Guarantor of the driver I have countersigned the competitor licence application and understand that I shall have the right to be present during any procedure being carried out under the Supplementary Regulations issued for this event and the NCR.

I confirm that I have acquainted myself and the minor with the NCR and agree to pay any appropriate charges and fees pursuant to those Regulations (to include any appendices thereto) and hereby agree to be bound by those Regulations and submit myself without reserve to the consequences resulting from these Regulations (and any subsequent alteration thereof). Further, I agree to pay as liquidated damages any fines imposed upon me up to the maxima set out in NCR Chapter 1 App.2

Where the Parent is not present there must be a Guardian signed on and who must produce a written and signed authorisation from the Parent/Guardian to act as their representative.

I hereby agree to abide by the ASN Safeguarding Policy and Guidelines and Code of Conduct.

I have read and fully understand the regulations for Control of Drugs and Alcohol as contained in the NCR Chapter 2 Art.2, Chapter 5 App.11 Art.1.6, Chapter 3 Art.17 and have also fully familiarised myself with the information on the web sites referred to ([www.motorsportuk.org](http://www.motorsportuk.org), [www.ukad.org.uk](http://www.ukad.org.uk) and [www.wada-ama.org](http://www.wada-ama.org)) in particular the UK Anti-Doping Rules which have been adopted by the ASN.

Further, if I am counter-signing as the Parent or Guardian of a minor then in addition to the deemed consent to the testing of that minor (UK Anti-Doping in Chapter 6) I hereby confirm that I give such consent for the minor concerned to be so tested.

I understand and agree that my personal data, and that of the persons connected to my entry are being processed solely for the purposes of running this and will be handled by the organisers in accordance with Motorsport UK data protection policy: [www.motorsportuk.org/data-protection](http://www.motorsportuk.org/data-protection).

Indemnity: In consideration of the acceptance of this entry I agree that neither any one of or any combination of Motorsport UK and its associated clubs, the organisers, the track owners or other occupiers, the promoters and their respective officers, servants, representatives and agents (the "Parties") shall have any liability for loss or damage which may be sustained or incurred by me as a result of participation in the event including but not limited to damage to property, economic loss, consequential loss or financial loss howsoever caused. Nothing in this clause is intended to or shall be deemed to exclude or limit liability for death or personal injury. To the fullest extent permitted by law I agree to indemnify and hold harmless each of the Parties in respect of any loss or damage whatsoever and howsoever arising from my participation in this event.

## 6. Advertising

---

### 6.1 Organiser's Advertising

The Organiser's advertising is detailed in Appendix 3. These must be affixed to the car for scrutineering and throughout the event.

### 6.2 Rally Plates

Competitor numbers and rally plates must be affixed to the car for scrutineering. These must be visible for the duration of the rally. High visibility numbers will be supplied by the organisers, to be displayed on the rear and side windows. A high visibility circle will be provided that must be attached to the windscreen on the navigator side. These will be available along with the doorplates and must be in position for scrutineering. Numbers will be provided as part of the entry fee. These can be collected from Taigh Solais / Mull Aquarium, Ledaig Car Park, Tobermory, PA75 6NR at the following times:

14.00hrs – 18.00hrs on Thursday 9<sup>th</sup> October or  
09.30hrs – 13.30hrs on Friday 10<sup>th</sup> October

## 7. Reconnaissance

---

### 7.1 Procedure for Registration

Practising will not be permitted and will result in disqualification from the event as per NCR2.2.7.14. Anyone found practising will be reported to the ASN. Recce, once registered, is unlimited in time and number of passes.

All competitors who have submitted an entry, including those not yet accepted, wishing to conduct reconnaissance on the island must record this fact along with vehicle details on the online entry form. All details must be with the Organisers by Thursday 18<sup>th</sup> September. Reconnaissance plates will be posted to the crew member nominated on the entry form no later than Sunday 21<sup>st</sup> September. **Once a competitor is in possession of the recce passes, it is mandatory to display them clearly on the outside of the recce vehicle.** Replacement stickers will be available on Island if they are not received. Contact the Event Secretary by email ([secretary@mullrally.org](mailto:secretary@mullrally.org)) to arrange. Failure to register and being witnessed on a designated stage after Thursday 25<sup>th</sup> September will be considered to be practicing, and NCR13.8.2.ff will apply.

Driving Standards Observers (DSOs) will be deployed throughout the island prior to the event. They will be judges of fact regarding all aspects of reconnaissance.

A reconnaissance video bulletin will be posted to the Official Notice Board prior to 21<sup>st</sup> September – all competitors must view this, prior to beginning reconnaissance. Potential competitors are reminded that the organiser has the right to refuse any entry without explanation. Should the organisers suspect that a

driver has been circumventing the reconnaissance requirements, then the organiser will exercise the right to decline an entry.

Competitors will be issued with 3 recce plates, which must be clearly displayed, to the front windscreen (top offside) and rear side windows. For all crews who provide full and correct reconnaissance vehicle details, these plates will be posted to the named contact on the entry form; for all other crews, plates will be available for collection by arrangement with the Event Secretary, by arrangement only on-island from the Organiser's agreed location 21<sup>st</sup> September through Friday 3<sup>rd</sup> October, or from Material Collection at the locations and times stated in SR6.2.

## 7.2 Restrictions

The maximum speed limit on special stages for reconnaissance, has been set at **40mph**, except where the speed limit is lower by law. From Sunday, 21<sup>st</sup> September, through to the start of the event, competing cars are forbidden to use any of the island roads used as Special Stages. Competing cars are not allowed to be used for reconnaissance at any time.

The only exception to this rule is that competition cars arriving on the island may only be driven directly to their accommodation and driven directly from their accommodation to the pre-event formalities on Thursday, the 9<sup>th</sup> and Friday, the 10<sup>th</sup> of October. This only applies if the competing car is not on a trailer. For reconnaissance, only standard cars or car derived vans as defined by the road traffic act (standard exhaust, plain colour, no sign writing, maximum of two auxiliary lamps) may be used for slow speed reconnaissance on the stages at any time. The use of intercom systems/headsets or helmets is not permitted at any time during reconnaissance.

Should you be involved in any incident during the reconnaissance with any property, pets, livestock or vehicles, this must be reported to the organisers by emailing [info@mullrally.org](mailto:info@mullrally.org) and contacting the Rally Emergency Number 07990192000 or 07990192888, no matter how small you may feel the incident is. If you have any incident involving pets, livestock, or deer please report it between 7am and 10pm to Donald MacLean at Knock Farm, Tel. 07799 121956 / 01680 300353. Please try to define your location precisely.

## 7.3 Offences During Reconnaissance

During reconnaissance, any speeding or incidence of bad driving whether recorded by the police or officials on a special stage or road section will result in the following penalties being levied by the Clerk of the Course:

First offence	£150
Second offence	Start Refused

The fine is levied as per the Regulations. The amount of the fine is unaltered by any fine that may or may not be levied by the police.

#### 7.4 Pace Notes / Subjective Route Notes

The use and/or possession of Pace Notes is authorised.

Subjective Route Notes are available from the following suppliers:

www.scotmaps.co.uk	Bill Sturrock	bill@scotmaps.co.uk	+44 (0)1356 667090
www.onthepacenote.co.uk	Craig Parry	onthepacenoteuk@gmail.com	+44 (0)7977 234790

## 8. Administrative Checks

---

### 8.1 Documents to be presented

At administrative checks the following documents will be checked and entry form details verified:

- Entrant's licenses.
- Competitor's licenses and club membership cards.
- Administrative checks will be undertaken online, in advance of the event.
- Competitors must supply mobile phone numbers for driver & co-driver and these mobile phones must be carried in the competing vehicle during the rally.
- Any competitors not signed on by 14.30, Friday 10<sup>th</sup> October may be deemed a non-starter.
- Timecards for all three legs will be issued at each briefing session, upon successful completion of administrative checks, sound test, scrutineering and competitors' briefing.

### 8.2 Competitors' Briefings

All competitors (Driver and Co-Driver) will be required to attend a safety briefing. These will take place on Friday 10<sup>th</sup> October in Aros Hall, Main Street, Tobermory, PA75 6NU, ///coarser.unopposed.luxury.

There will be 3 briefing sessions based on the seeded entry list. Timecards will be issued at each briefing session. Any crew not attending will not receive their timecards and will not be allowed to start. All reserve competitors should attend the final briefing at 15.30.

Session times are:	Cars 1 – 50	14.40
	Cars 51 – 100	15.00
	Cars 101 onwards	15.30

## 9. Features of the Rally

---

### 9.1 Official Notice Board

There will be no physical Notice Board. The Official Digital Notice Board will be on [www.mullrally.org](http://www.mullrally.org).

All official documentation before and during the event will also be posted to the 'Sportity' app, <https://webapp.sportity.com/channel/mullrally2025>. Posting times for each document will be that given on the document.



## 9.2 Start Procedure

The first 15 cars in the Start List for Leg 1 must be at the start by 18.45 for display purposes. Failure to comply will result in a £100 fine.

## 9.3 Ordnance Survey Maps

The route is covered by Ordnance Survey sheet numbers 47, 48, 49 (1:50,000).

## 9.4 Running Order, Starting Intervals and Timing

Cars will be seeded in order of anticipated performance. Start lists will be produced for each leg showing running order from first control in that leg. Cars will start legs 2 & 3 in the order based on the results at the end of the previous leg. The organisers reserve the right to amend this start list to reposition a competitor on the grounds of safety.

All crews will run at one-minute intervals, except on Leg 2 Saturday daytime, when all crews will start at 30-second intervals.

Timecards for all three legs will be issued at each briefing session, upon successful completion of administrative checks, sound test, scrutineering and competitors' briefing.

In accordance with NCR, timing will be by "traditional" / "contact" methods, with competitors presenting timecards to the marshals. Timecards will be collected at Stop Controls or Time Controls. In select individual cases, timekeeping marshals may elect not to engage in contact timing – please respect their wishes, and follow marshals' instructions in the completion of your timecard at these controls.

Special stages will be timed by automatic timing to the preceding 1/10<sup>th</sup> second.

At the end of the Rally or end of a leg, competitors are authorised to check in in advance of their due time. Competitors arriving early must have their due time entered on the time card; those arriving later than their due time must have their actual time of arrival entered.

## 9.5 Damage Declaration

At the end of the Rally a damage declaration must be filled by every competitor, and within 48hr of finishing the event. Reporting of any incident no matter how minor is a **must**. Failure to comply may result in reporting to the ASN and a fine of up to £100.

## 9.6 Starting System of Special Stages

The following start light system will be used on all stages:

15 seconds	Red light on
10 seconds	Red and all amber lights on
5 seconds	Red off and all amber lights on
5 – 1 seconds	Individual amber lights go off
0 seconds	Green light on
+6 seconds	Green light off

## 9.7 Rejoin After Retirement on Legs 1 or 2

A crew which has failed to complete Leg 1 or 2 can re-start the rally from the start of the next Leg only if they confirm their intention to the Clerk of the Course by WhatsApp or text to the HQ phone lines (07990192000 or 07990192888) at least one hour prior to the publication of the start list of the subsequent Leg. The competitor must advise the organiser of the reason for the retirement (e.g. accident, technical problems, etc) and the intention to have the car re-scrutineered. Restart is only allowed if the competitor started the preceding leg.

This shall apply to any car which has been retired from the previous leg on the grounds of exceeding the time limit or has failed to report to a control but shall not apply where the car has been disqualified for breach of eligibility requirements, traffic infringements or by a decision of the Clerk of the Course.

To be classified as a finisher, a competitor must report to all Leg Start Controls and TC19A, and complete at least two-thirds (i.e. 13 out of 19) of the stages.

### 9.7.1 Service Location and Time Allowed

Any car which fails to finish a leg in accordance with the above may be repaired at the competitor's discretion. However, the car must report to the start area for the next leg, no later than 30 minutes before the due start time of car 1, to be re-scrutineered.

### 9.7.2 Scrutineering of Repaired Cars

The car must retain its original body shell and engine block as fitted at pre-event scrutineering. The competitor must be represented during this re-scrutineering.

### 9.7.3 Re-start Penalties

For all crews which restart a time penalty will be applied. The time penalty will be as follows:

1. For every stage missed: Stage Target Time +15mins
2. Should retirement occur after the last special stage before the start of the next Leg the crew will nonetheless be deemed to have missed that last special stage.

## 9.8 Penalties

Penalties referred to in NCR 13.8.1. for Target Timed events apply, with the following exceptions:

(a) Not reporting or reporting OTL at a control – Retired from Leg

(h) Lateness over Target Time for road sections, service areas and special stages will be cumulative up to a maximum of 15 minutes between the start of each Leg to the final control of each Leg and reset again from the following Leg start. The following penalties will apply:

(i) Up to 15 minutes – Penalty free / (ii) Over 15 minutes – Retired from Leg

For each minute before or after due time at the TC at start of a leg, or immediately following a regroup – 10 seconds per minute to an maximum of 15 minutes late

Breach of NCR 13.18.1.3, 13.18.1.7 & 13.18.1.8 – disqualification from the event

## 9.9 Judges of Fact

Lists of Judges of Fact will be posted on the Official Notice Board along with a list of what they will be observing. Judges and/or DSOs will be appointed to report on sound levels. Excessive sound will include instantaneous occurrence of noise such as that produced by backfiring caused by anti-lag systems. The penalty for excessive sound may go as far as disqualification.

## 9.10 Results Posting

Provisional results will be posted online by 09:00, on Sunday 12<sup>th</sup> October. Any Protest must be lodged in accordance with NCR 2.9. Appeals must be made in accordance with NCR 2.4, and/or 2.5-2.6. All crews must be available for electronic communication until the period for protest has expired.

A protest against the eligibility of any vehicle or part of a vehicle must be made within 30 minutes of the recorded time of the last car at the final control.

## 9.11 Shakedown

A representative shakedown stage will be held in two sessions between 08.30 – 11.00 and 11.30 – 14.00 on Friday 10<sup>th</sup> October. The shakedown stage is the road to Glengorm Castle near Tobermory, and the road will be run in both directions.

Each shakedown session will be restricted to thirty-five crews. Should this number be exceeded, participation will be at the organiser's discretion. The entry form for shakedown is on the main event entry form and the fee is **£160**.

All cars participating in shakedown must have been scrutineered on Thursday 9<sup>th</sup> October.

Competitors may only sign up for / go out in **one** 2 hour 30 min session. Competitors are allowed as many runs as they can achieve within this window, but may not take part in the other session.

Any variation from the signed-on entered crew for the rally, for the purposes of shakedown (e.g. change of co-driver), must be advised to the Entries Secretary in advance, by Tuesday 7<sup>th</sup> October. All persons participating in the shakedown must be fully signed-on, and fully scrutineered safety equipment in accordance with ASN requirements must be worn at all times. Crews must comply with NCR 13.10.7.5 – 13.10.7.8. for each run over the Shakedown stage.

Competitors are responsible for their own reconnaissance of the shakedown stage before Friday 10<sup>th</sup> October and SR7.2 & 7.3 apply to this road. Glengorm Coffee Shop (<http://betrayal.swimsuits.prefer>) will be open 09:00 - 16:00 Wednesday - Monday during the reconnaissance period.

### 9.12 Safety Tracking

In association with Sporttraxx and Onthepacenote.co.uk, the rally will operate a mandatory GPRS safety tracking system that will enable the speed and position of each competing vehicle to be monitored and logged. Before the start (i.e. prior to Shakedown, or prior to TCO), all cars will be fitted with a tracking device that will remain active throughout the event. This must be retained in the car until the finish where it will be removed by the system providers. If a competitor retires during the event, **the device must be returned to the suppliers before leaving the island** – either via the **Sweeper Car**, at **Rally HQ**, or at **Ledaig Car Park, Tobermory** on Sunday 12<sup>th</sup> October at a time advised by the system providers. Non-return of a unit will be treated as per failure to hand in damage declaration (NCR 13.13.14.4.) – i.e. disqualification, penalty of up to £100, and may be reported to the ASN for further disciplinary action.

In the case of an accident where urgent medical attention is required, the following applies:

- The SOS display on the safety tracking device must be activated as soon as possible.
- When possible, the red “SOS” sign should immediately be displayed to the following cars and to any helicopter attempting to assist.
- As soon as possible, the red triangle must be placed in a conspicuous position on the same side of the road as the car at least 100 metres before the car’s position, in order to warn following drivers, even if the car is off the road.

Any crew which has the red “SOS” sign displayed to them, or which sees a car which has suffered an accident, and the OK sign is not shown, shall immediately and without exception stop to render assistance. All following cars shall also stop. The second car at the scene shall proceed to inform the next radio point. Subsequent cars shall leave a clear route for emergency vehicles. All crews stopping under this procedure will be allocated a time as per NCR 13.2.4.34 ,4.35, 4.36 and 4.38

In the case of an accident where immediate medical intervention is not required, or of a car stopping for any other reason on or beside a special stage, whether temporarily or permanently, the following applies:

- The OK display on the safety tracking device must be activated within one minute.
- The “OK” sign must immediately be displayed to the following cars and to any helicopter attempting to assist. If the crew leaves the vehicle, the “OK” sign must be displayed so that it is clearly visible to all the other competitors.
- The red triangle must be placed in a conspicuous position on the same side of the road as the car by a member of the crew at least 100 metres before the car’s position, in order to warn following drivers, even if the car is off the road.

Should it not be possible, or for whatever reason, to display the OK/SOS board in any of the above situations, this may be replaced by an evident and clearly understandable sign language shown by the crew outside of the car:

- an arm and thumb up to indicate "OK"



- crossed arms above the head to indicate "SOS".

Any crew which is able but fails to comply with any of the above rules will be reported to the Clerk of the Course, who may apply a penalty.

## 10. Servicing

---

### 10.1 Permitted Areas

Servicing will only be permitted from one service vehicle identified by an official sticker, only at areas designated as Service Areas in the Road Book.

**Emergency, Management or Auxiliary service is prohibited on the event** and organised assistance anywhere other than these permitted areas is forbidden and could lead to disqualification from the event. **This will be stringently monitored and policed.**

### 10.2 Service Health & Safety

Attention is drawn to current Health & Safety Regulations and to the current ASN Service Area Guidelines. Please note that these have been updated as of 01 February 2025 and contain some new requirements. <https://motorsportuk.s3.eu-west-2.amazonaws.com/wp-content/uploads/2024/11/Annex-P-Service-Area-Guidelines-October-2024.pdf>

We **strongly recommend** that all service crews carry suitable fire extinguishers and spill kits. All competitors **MUST use a tarpaulin sheet** under the car they are servicing.

### 10.3 Refuelling

Competitors may only refuel in the refuel zones defined in the road book, or by using commercially available pump fuel dispensed directly from pumps at filling stations on the rally route. **Refuelling in the Service Parks is prohibited.**

Fuel is available from the following suppliers:

<a href="http://www.vitalequipment.co.uk">www.vitalequipment.co.uk</a>	Carless Racing Fuels	<a href="mailto:info@vitalequipment.co.uk">info@vitalequipment.co.uk</a>	+44 1981 241169
<a href="http://www.andrewgallacher.com">www.andrewgallacher.com</a>	Gulf Race Fuels	<a href="mailto:andrewgallachermotorsport@hotmail.com">andrewgallachermotorsport@hotmail.com</a>	+44 1563 537145

### 10.4 Tyres

In accordance with NCR 13.16.7.11., the approved maximum quantity of tyres per competing car for the event will be **18 tyres**. A Tyre declaration form will be supplied and must be completed and kept in the competition car at all times for monitoring purposes.

The maximum number allowed for Leg 1 will be 12 tyres; thereafter 2 tyres may be added for each return to service / end of Leg after 45 planned competitive miles during the event, but these may not be used prior to the relevant service point, i.e.

12 tyres for Leg 1

+ additional 2 tyres from Service B onwards

+ additional 2 tyres from TC14A (End of Leg 2) onwards

+ additional 2 tyres from Service C onwards

Where there is significantly heavy rainfall and the Clerk of the Course, with the approval of the ASN Steward, issues a Bulletin declaring a 'wet' Event, the use of wet tyres will be permitted outside of the specified allowance on the grounds of safety

## 11. In-Car Cameras

---

### 11.1 Filming Rights

Competitors, teams and entrants who wish to carry on-board cameras must contact the Promoter to obtain the necessary licence and permissions prior to the event. Any competitor wishing to use an on-board camera must notify the Organisers of this on the entry form. No other on-board video or film camera will be permitted without the written authority of the Promoter, the Mull Rally Trustees. **The rights to footage obtained by such devices remain with the Promoter, the Mull Rally Trustees.**

**At the sole request of the Organisers or appointed Media Manager, any competitor may be required to carry an onboard camera and/or an event board affixed to the dashboard in a visible position for the camera. This is a condition of entry.**

## 12. Prizes

---

### 12.1 Location

Prize giving will take place outside at Ledaig Car Park, Tobermory at 15.00 on Sunday 12<sup>th</sup> October.

### 12.2 Prizes

Winners of the overall awards are not eligible for class awards. All perpetual trophies are to be retained for 11 months; it is the competitor's responsibility to return these trophies.

1<sup>st</sup> Overall Driver

1<sup>st</sup> Overall Co-driver

2<sup>nd</sup> Overall Driver

2<sup>nd</sup> Overall Co-driver

3<sup>rd</sup> Overall Driver

3<sup>rd</sup> Overall Co-driver

1<sup>st</sup> in Class Driver and Co-driver

2<sup>nd</sup> in Class Driver and Co-driver

3<sup>rd</sup> in Class Driver and Co-driver



## 12.3 Eligibility for Awards

### Grp N Award

The Rallytech Trophy to be held for one year, and replica to be retained, for the best overall result by a Class 4 (Rally3 / Grp NR4) or NR3 car regardless of other awards.

### 2 Wheel Drive Award

The Mishnish Lochs 2 Wheel Drive Trophy donated by Gardiner & Co, to be held for one year, and replica to be retained, for the best overall result by a 2WD car outside Top 3 Overall.

### Beatsons Building Supplies 2WD Award New for 2025

All crews that are classified as finishers and competing in a 2 wheel drive car will be entered into a ballot, and a **free entry for 2026** will be awarded to one FWD and one RWD crew.

### Winners of Class 5

Paul Tomlins Memorial Trophy

### Susan Cameron Trophy

This will be awarded to the highest placed co-driver in a Class 9 car.

### R.A.C.E. Escort Challenge

This will be awarded to the highest placed qualifying rear wheel drive Ford Escort according to the criteria in Appendix 4. An award plus £500 voucher kindly donated by Rally And Competition Equipment Ltd

### Service Crew Awards

The Gary Bratt Memorial Trophy, donated by Paul Marshall. To the service crew that performs beyond the call of duty. Consideration will be given to suggestions for suitable recipients. Suggestions to be emailed to [info@mullrally.org](mailto:info@mullrally.org) prior to results being deemed final.

### Spirit of the Rally Award

Duart Castle Trophy. Consideration will be given to suggestions for suitable recipients. Suggestions to be emailed to [info@mullrally.org](mailto:info@mullrally.org) prior to results being deemed final

### Marshals Award

The Simon Bibby Memorial Trophy. To a marshal who goes above and beyond the call of duty on the event. Suggestions to be emailed to [info@mullrally.org](mailto:info@mullrally.org) prior to results being deemed final.



▪ **Best Clitheroe & District Motor Club Crew**

For the best Clitheroe and District Motor Club crew (driver and co-driver in the same car) not winning another award except team or a discretionary award.

**Best Malton Motor Club Crew**

For the best Malton Motor Club crew not winning any other award except team or a discretionary award and being members before 1/6/2025.

**Best Presented Car**

The Laurence Willis Memorial Trophy to be held for one year and a replica to be retained. For the best presented car throughout the rally.

**Team Award**

The result will be calculated on lowest total penalties of the three cars.

**Best Crew Resident in Yorkshire**

For the highest placed Yorkshire crew not winning another trophy except team or a discretionary award.

**Best Newcomer Crew**

Donnie MacKay Trophy and two replicas to the best newcomer crew – never entered Mull Rally/Tour of Mull.

**Best Mull Newcomer**

James A Davis Memorial Rose bowl and two replicas to best Mull newcomers (driver resident on Mull).

**Best Mull Resident Crew**

Driver – Alexander MacLean Trophy and replica

Co-Driver – Lord MacLean of Duart Trophy

**Best Scotland Resident Crew**

Driver – Sinclair Plant Trophy

Co-Driver – Strathclyde Regional Council Trophy

**Best Entertainer**

Allan MacKay Trophy and two replicas

**Best Improvement on Seeding**

John Allan Memorial Trophy

Appendix 1 – Schedules

2025 BEATSON'S BUILDING SUPPLIES MULL RALLY					
		AK	15-Jul-25		
Shakedown <span style="float: right;">Friday 10 October 2025</span>					
Sunrise 07:46				Sunset 18:34	
TC	Location	SS	Liaison	Target	First Car
SS		Miles	Miles	Time	Due
	Shakedown Service - Tobermory	-	-		
	Shakedown Start	-	-		
<b>SD</b>	<b>Shakedown Stage - Glengorm</b>	<b>2 86</b>	-	Session 1	08:30 / 10:45
			0 91		
<b>SD</b>	<b>Shakedown Stage - Glengorm</b>	<b>2 95</b>	-	Session 2	11:15 / 13:30
	Shakedown Service - Tobermory	-	-		
SHAKEDOWN TOTALS		5 81	0 91		
		(86.46%)	(13.54%)		
Sections 1 & 2					
Sunset 18:34				Sunrise 07:48	
TC	Location	SS	Liaison	Target	First Car
SS		Miles	Miles	Time	Due
<b>RZ</b>	<b>Refuel - Tobermory</b>				
<b>1</b>	<i>Distance to next refuel</i>	<i>(27.11)</i>	<i>(13.17)</i>		
0	Tobermory		0 60		19:00
1			0 75	00:07	19:07
<b>SS 1</b>	<b>Mishnish (W)</b>			<b>(00:03)</b>	<b>19:10</b>
SF1		<b>6 68</b>			
2			1 11	00:11	19:30
<b>SS 2</b>	<b>Calgary (S) 1</b>			<b>(00:03)</b>	<b>19:33</b>
SF2		<b>10 12</b>			
3			0 21	00:11	19:53
<b>SS3</b>	<b>Loch Tuath</b>			<b>(00:03)</b>	<b>19:56</b>
SF3		<b>10 31</b>			
<b>RZ</b>	<b>Refuel - Garmony</b>				
<b>2</b>	<i>Distance to next refuel</i>	<i>(14.64)</i>	<i>(10.57)</i>		
			<i>(58.42)</i>		
<b>3A</b>	Garmony Regroup IN		<b>10 93</b>	00:28	20:34
	Garmony Regroup			00:17	
<b>3B</b>	Garmony Regroup OUT		0 03		20:51
<b>3C</b>	Service IN		4 58	00:10	21:01
<b>Service A (Craignure)</b>		<b>(27.24)</b>	<b>(18.16)</b>	<b>00:33</b>	
<b>3D</b>	Service OUT				21:34
4			<b>29 04</b>	00:59	22:33
<b>SS 4</b>	<b>Ardtun</b>			<b>(00:03)</b>	<b>22:36</b>
SF4		<b>2 61</b>			
5			1 71	00:11	22:53
<b>SS 5</b>	<b>Ardtun</b>			<b>(00:03)</b>	<b>22:56</b>
SF5		<b>2 61</b>			
6			<b>10 78</b>	00:33	23:35
<b>SS 6</b>	<b>Scridain N 1</b>			<b>(00:03)</b>	<b>23:38</b>
SF6		<b>4 63</b>			
7			6 35	00:21	00:04
<b>SS 7</b>	<b>Knock N 1</b>			<b>(00:03)</b>	<b>00:07</b>
SF7		<b>4 79</b>			
<b>RZ</b>	<b>Refuel - Gruline +1 mile to Salen</b>				
<b>2</b>	<i>Distance to next refuel</i>	<i>(13.97)</i>	<i>(10.57)</i>		
			<i>(58.42)</i>		
8			<b>5 57</b>	00:22	00:32
<b>SS 8</b>	<b>Glen Aros / Hill Road</b>			<b>(00:03)</b>	<b>00:35</b>
SF8		<b>13 97</b>			
8A	Salen		<b>14 21</b>	00:40	01:27
FRIDAY TOTALS (8 SS)		55 72	85 87		
		(40.66%)	(59.34%)		

Section 1

Section 2

**2025 BEATSON'S BUILDING SUPPLIES MULL RALLY**

0.08	15-Jul-25
------	-----------

**Sections 3 & 4 - 30 seconds** **Saturday 11 October 2025**

Sunrise 07:48 Sunset 18:32

TC	Location	SS	Liaison	Target	First Car
SS		Miles	Miles	Time	Due
<b>RZ 3</b>	<b>Refuel - Tobermory</b>	-	(7.20)		
	<i>Distance to next refuel</i>	(28.49)	(34.88)		
8B	Restart - Craignure				11:20
9			16 73	00:37	11:57
<b>SS 9</b>	<b>Scridain N 2</b>			<b>(00:03)</b>	<b>12:00</b>
SF9		4 63			
10			6 35	00:21	12:26
<b>SS 10</b>	<b>Knock N 2</b>			<b>(00:03)</b>	<b>12:29</b>
SF10		4 79			
11			2 24	00:14	12:48
<b>SS 11</b>	<b>Tuath/Hill Road</b>			<b>(00:03)</b>	<b>12:51</b>
SF11		14 36			
12			0 96	00:10	13:13
<b>SS 12</b>	<b>Mishnish (E) 1</b>			<b>(00:03)</b>	<b>13:16</b>
SF12		6 55			
12A	Tobermory Regroup IN		0 80	00:07	13:29
	Tobermory Regroup				
12B	Tobermory Regroup OUT / Service IN			00:12	13:41
<b>Service B (Tobermory)</b>		<b>(28.49)</b>	<b>(26.43)</b>	<b>00:46</b>	
12C	Service OUT		3 32		14:27
<b>RZ 4</b>	<b>Refuel - Tobermory</b>	-	(7.20)		
	<i>Distance to next refuel</i>	(19.07)	(34.88)		
13			9 61	00:22	14:49
<b>SS 13</b>	<b>Tuath/Hill Road 2</b>			<b>(00:03)</b>	<b>14:52</b>
SF13		14 36			
14			0 95	00:10	15:14
<b>SS 14</b>	<b>Mishnish (E) 2</b>			<b>(00:03)</b>	<b>15:17</b>
SF14		6 55			
14A	Tobermory		0 74	00:05	15:24
<b>SATURDAY DAY TOTALS (6 SS)</b>		51 24 (52.46%)	41 70 (47.54%)		

Section 3

Section 4

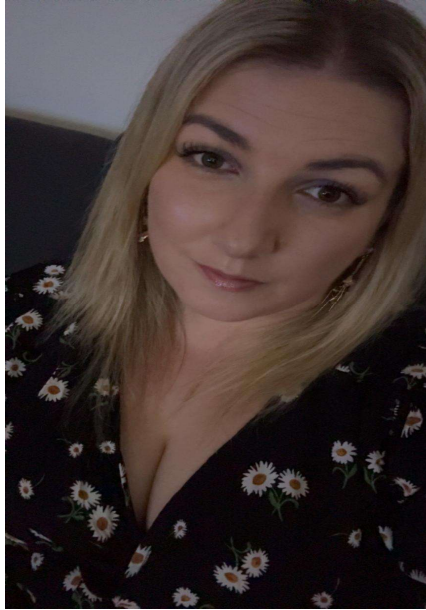
BEATSON'S BUILDING SUPPLIES MULLRALLY		2025 BEATSON'S BUILDING SUPPLIES MULL RALLY	
		0.08	15-Jul-25
Sections 6 & 7		Saturday 11 October 2025	
Sunset 18:32		Sunrise 07:50	
TC	Location	SS	Liaison
SS		Miles	Miles
			Target Time
			First Car Due
<b>RZ 5</b>	Refuel - Garmony		(3.87)
	<i>Distance to next refuel</i>	(11.42)	(29.54)
14B	Restart - Salen		20:30
15			21:03
<b>SS 15</b>	<b>Calgary (S) 2</b>		<b>00:33</b>
SF15		10 12	<b>(00:03)</b>
16			21:55
<b>SS 16</b>	<b>Knock (S)</b>		<b>00:38</b>
SF16		4 44	<b>(00:03)</b>
17			22:11
<b>SS 17</b>	<b>Gribun (S)</b>		<b>00:10</b>
SF17			<b>(00:03)</b>
18		2 67	22:33
<b>SS 18</b>	<b>Scridain (S)</b>		<b>00:14</b>
SF18		4 31	<b>(00:03)</b>
18A	TSL Regroup IN		23:16
	TSL Regroup	15 48	00:37
18B	TSL Regroup OUT		00:27
		0 50	23:43
18C	Service IN		00:27
		1 26	23:48
	<b>Service C (Craignure)</b>	(11.42)	<b>00:05</b>
		(23.96)	<b>00:40</b>
18D	Service OUT		00:40
			00:28
<b>RZ 5</b>	Refuel - Garmony		(3.87)
	<i>Distance to next refuel</i>	(21.90)	(29.54)
19			00:30
<b>SS 19</b>	<b>Glen Aros-Mishnish Lochs</b>		<b>00:30</b>
SF19		16 63	<b>(00:05)</b>
19A	Tobermory		01:01
			00:07
<b>SATURDAY NIGHT TOTALS (5 SS)</b>		38 17	01:18
		(47.06%)	(52.94%)

TOTALS OF THE RALLY			
	SS	Liaison	%
Friday 11 October	55 72	85 87	39 4%
Saturday 12 October	51 24	41 70	55 1%
Saturday 12 October	38 17	59 30	39 2%
<b>Total - 19 SS</b>	<b>145 13</b>	<b>186 87</b>	<b>43 7%</b>

Timings and mileages may slightly vary!

## Appendix 2 – Competitor Liaison Officers

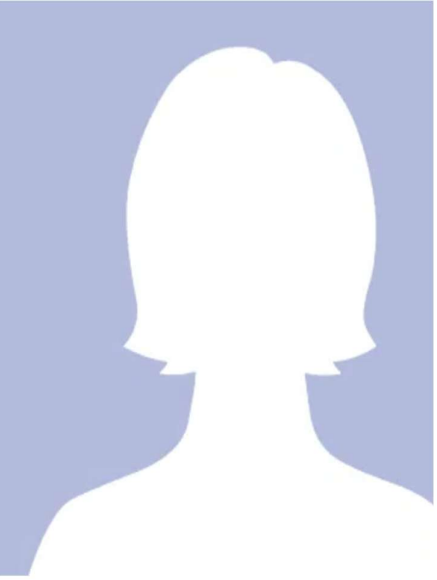
---



Amanda Morrison  
+44 (0)7776 054962



Campbell Roy  
+44 (0)7710 513542



Dave Thompson  
+44 (0)7934 008792

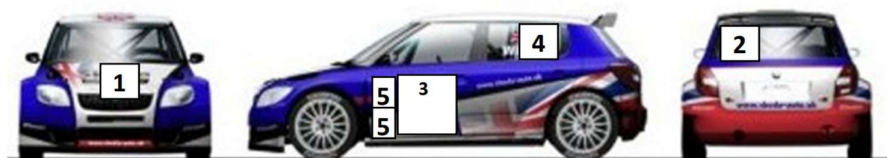
[clo@mullrally.org](mailto:clo@mullrally.org)

## Appendix 3 – Competitor Numbers and Advertising

---

### Mandatory Event Rally Plates:

1. 1 x Front Rally Plate - 30 x 20cm
2. 1 x Rear Window Number Panel, bottom of screen - 18 x 18cm
3. 2 x Square Door Panels with number - 50 x 50cm
4. 2 x Hi-Vis Side Window Number Sets - 20cm high
5. 3 x Side pair of sponsor's logos 16 x 20cm



## Appendix 4 – Rally & Competition Equipment Escort Challenge Eligibility

---

The Race & Competition Equipment Escort Challenge is open to any crews who enter the 2025 Mull Rally in a RWD Mk1 or Mk2 Ford Escort or a RWD Mk3-4-5-6 Ford Escort conversion – as defined by the Make/Model on the entry form and Motorsport UK/Motorsport Ireland log book or vehicle passport. There is no restriction on engine / gearbox used. To be eligible for the award, competitors must register via the entry system and carry organiser-provided R.A.C.E. stickers.

The scoring system for the award is as follows:

Score = Overall Finishing Position + Handicap

Lowest Score wins the award.

Handicap System

Number of previous Tour of Mull or Mull Rally Starts since 2000 as a driver	Handicap
10 or more	5
6 to 9 inc	4
4 or 5	3
1 to 3 inc	2
0	0

In the event of a tie, the driver with the better Overall Finishing Position wins. In common with the class awards, the top 3 overall finishers are not eligible for the R.A.C.E. Escort Challenge.

## Appendix 5 – Safety Tracking System Instructions



### How to use the Sporttraxx FIA/22 Rally Tracker

#### Collection of mounting kit

The mounting kit and the installation instructions will be provided at scrutineering. The competitor must install the cradle before the technical scrutineering, strictly following the provided instructions. There is no need for any power supply cable nor installation of antennas.

Do not hesitate in contacting Sporttraxx for any question.

#### Tracker delivery

The tracker will be installed in the rally car by a Sporttraxx technician, during the before the first time control. In case the installation of the cradle is not respecting the provided guidelines and the location of the tracker is technically not suitable for its correct functioning, the Sporttraxx technician will inform the competitor who will have to follow the given prescriptions.




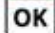
#### Tracker always ON

The tracker will be provided in ON status. Any attempt of turning it OFF or tampering with the device, is transmitted to Race control, logged in the tracker and will be reported to the Stewards.

The internal batteries will last for the duration of the race.

#### On special stage

##### Crash or Stop

- |                |   |   |
|----------------|---|---|
| Press and hold |  | till beep in case urgent medical intervention is needed               |
| Press and hold |  | till beep in case of fire on board                                    |
| Press and hold |  | till beep to report a dangerous situation or a road block             |
| Press and hold |  | till beep to report you are OK and do not need any special assistance |

##### Multiple information

You can send more than one message, in a sequence based on importance. Examples:

- You stopped, you send  but also  as your car is an obstacle for the following competitors
- You crashed, you need medical help  and you have also a fire problem 

### Acknowledgement

Few seconds after the transmission of a message, and the green LED bar confirm the message has been received in race control.



Missing this acknowledgement, please repeat again the procedure.

### Red Flag

The flashing red LED bar + buzzer sound is signalling a RED FLAG instruction from Race Control.



Press and hold the **OK** button to quit the warning and to acknowledge its reception. Behave accordingly.

### On road sections

#### Call back

The flashing green led bar are asking you to call Race Control using your phone, for important information.

Press and hold the **OK** button to quit the request and to acknowledge its reception to Race Control.

#### Note:

The  button can have different meanings depending on the regulations of each event.

Usually the **OK** button must be pressed within 1 minute from a stop in SS. That may vary. Please check the rules of your event.



**SPORTTRAXX ON EVENT CONTACT: +44 (0)7934 008792**

## Appendix 6 – Race With Respect

---



 **RACE WITH RESPECT**  
motorsport uk

Encouraging a positive environment, on and off the track

A socially-minded standard of behaviour is expected from everyone within the motorsport community.

By participating in a Motorsport UK event, in any capacity, you are agreeing to follow the values of the governing body's Respect Code:

- **RESPECT**
- **INTEGRITY**
- **FAIR PLAY**
- **SELF-CONTROL**
- **GOOD MANNERS**

[motorsportuk.org/racewithrespect](https://motorsportuk.org/racewithrespect)  
#RaceWithRespect

MEMBER OF 



## RACE WITH RESPECT

I pledge to #RaceWithRespect and:

- Contribute to a welcoming and friendly environment that ensures the safety and welfare of all participants
- Always behave with integrity and uphold fairness in the sport; play your part in keeping the sport safe through your actions
- Treat everyone with respect, regardless of their gender, ethnic or social background, language, religious or other beliefs, disability, sexual identity or other status
- Recognise that we all represent the sport and therefore have a duty to be polite and respectful to all staff, officials, fellow competitors, volunteers, as well as fans and supporters
- Respect the rules, regulations and authority of the officials and Motorsport UK

I understand that breaching these obligations may result in disciplinary action.

[motorsportuk.org/racewithrespect](https://motorsportuk.org/racewithrespect)

#RaceWithRespect

MEMBER OF



Appendix 7 – Environmental Sustainability

The infographic features a green background with a forest scene and a car. It includes the Motorsport UK logo, the title 'BE THE CHANGE', and four circular icons representing spillages, travel, recycling, and education. A QR code and contact information are at the bottom.

**motorsport uk**

# BE THE CHANGE

HERE'S HOW YOU CAN HELP TO MAKE OUR SPORT MORE SUSTAINABLE

- SPILLAGES**  
CARRY DRIP TRAYS, MATTING AND SPILL KITS
- TRAVEL**  
POOL EVENT TRAVEL AND CONSIDER LOCAL SUSTAINABLE HOTELS
- RECYCLE**  
USE RECYCLING FACILITIES AT VENUES AND NEAR HOME IF POSSIBLE
- EDUCATION**  
REVIEW MOTORSPORT UK POLICY AND TRAINING

To find about more about sustainability in motorsport scan the QR code  
<https://www.motorsportuk.org/about-us/environmental-sustainability/>

@ourmotorsportuk | #ourmotorsportuk